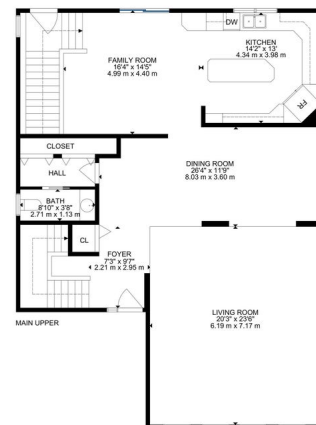


**\$849,000 - 10503 135 Street, Edmonton**

**\$849,000**

Glenora, Edmonton, AB

A two-story white house with a wooden deck and a black SUV parked in the driveway, surrounded by snow. The house features a prominent gable roof and large arched windows. A Canadian flag is visible on the left side of the property. The scene is set in a snowy environment with evergreen trees in the background.



GROSS INTERNAL AREA  
BASEMENT: 96 m<sup>2</sup>, 1022 SQ FT, MAIN LEVEL: 150 m<sup>2</sup>, 1614 SQ FT, MAIN LEVEL: 123 m<sup>2</sup>, 1323 SQ FT  
EXCLUDED AREAS: GARAGE: 44 m<sup>2</sup>, 473 SQ FT  
TOTAL: 366 m<sup>2</sup>, 3959 SQ FT  
SIZE AND DIMENSIONS ARE APPROXIMATE. ACTUAL MAY VARY

## Essential Information

MLS® #	E4417135
Price	\$849,000
Bedrooms	3
Bathrooms	3.50

Full Baths	3
Half Baths	1
Square Footage	2,939
Acres	0.00
Year Built	1949
Type	Single Family
Sub-Type	Detached Single Family
Style	2 Storey
Status	Active

### Community Information

Address	10503 135 Street
Area	Edmonton
Subdivision	Glenora
City	Edmonton
County	ALBERTA
Province	AB
Postal Code	T5N 2C8

### Amenities

Amenities	Deck, Front Porch, Vaulted Ceiling
Parking	Double Garage Attached

### Interior

Interior Features	ensuite bathroom
Appliances	Dishwasher-Built-In, Dryer, Garage Control, Garage Opener, Refrigerator, Stove-Electric, Washer, Window Coverings
Heating	Forced Air-1, Hot Water, Natural Gas
Fireplace	Yes
Fireplaces	Mantel
Stories	3
Has Basement	Yes
Basement	Full, Finished

### Exterior

Exterior	Wood, Vinyl
Exterior Features	Corner Lot, Fenced, Paved Lane, Playground Nearby, Public Transportation, Schools
Roof	Asphalt Shingles

Construction	Wood, Vinyl
Foundation	Concrete Perimeter

**School Information**

Elementary	Glenora, St Vincent
Middle	Westminster
High	Ross Shep, Mac

**Additional Information**

Date Listed	January 6th, 2025
Days on Market	103
Zoning	Zone 11

DATA IS DEEMED RELIABLE BUT IS NOT GUARANTEED ACCURATE BY THE REALTORS® ASSOCIATION OF EDMONTON. COPYRIGHT 2025 BY THE REALTORS® ASSOCIATION OF EDMONTON. ALL RIGHTS RESERVED.Trademarks are owned or controlled by the Canadian Real Estate Association (CREA) and identify real estate professionals who are members of CREA (REALTOR®, REALTORS®) and/or the quality of services they provide (MLS®, Multiple Listing Service®)

Listing information last updated on April 19th, 2025 at 5:02am MDT