

Courtesy Of Jeff D Jackson Of Bode

# \$644,900 - 2736 65 Street, Edmonton

MLS® #E4418651

**\$644,900**

4 Bedroom, 3.00 Bathroom, 1,852 sqft

Single Family on 0.00 Acres

Mattson, Edmonton, AB

Discover The Paxton by San Rufo Homes â€” a masterpiece of modern design that seamlessly blends style, functionality, & comfort. This stunning 4-bedroom, 3-bathroom home offers an ideal layout for families & professionals alike, featuring a convenient side entrance & a versatile main-floor 4th bedroom that can serve as a guest bedroom, office, or playroom. The heart of the home is a breathtaking great room with an open-to-above design & a cozy fireplace, perfect for both entertaining & quiet evenings. The spacious kitchen, anchored by a large island, is a chefâ€™s dream & a central hub for gatherings. Upstairs, a bonus room provides a flexible space for relaxation or recreation, while the practical upstairs laundry simplifies everyday living. Retreat to the spa-like ensuite with dual sinks, a luxurious drop-in tub, & a separate shower for a touch of indulgence. The Paxton elevates every moment, offering a home where style meets purpose & comfort is always in abundance. Photos representative.

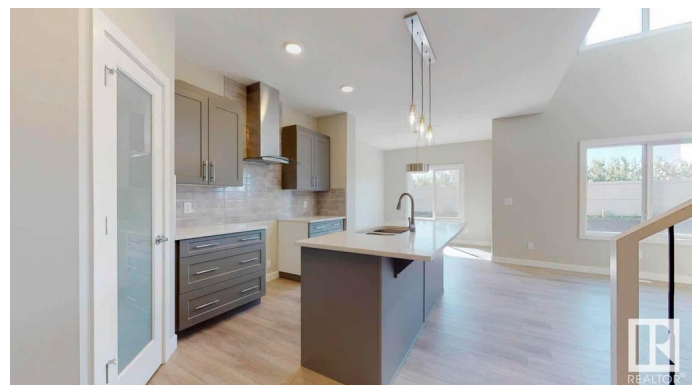


Built in 2025

## Essential Information

MLS® # E4418651

Price \$644,900



Bedrooms	4
Bathrooms	3.00
Full Baths	3
Square Footage	1,852
Acres	0.00
Year Built	2025
Type	Single Family
Sub-Type	Detached Single Family
Style	2 Storey
Status	Active

### **Community Information**

Address	2736 65 Street
Area	Edmonton
Subdivision	Mattson
City	Edmonton
County	ALBERTA
Province	AB
Postal Code	T6X 1A3

### **Amenities**

Amenities	No Animal Home, No Smoking Home, See Remarks
Parking Spaces	4
Parking	Double Garage Attached

### **Interior**

Interior Features	ensuite bathroom
Appliances	None
Heating	Forced Air-1, Natural Gas
Fireplace	Yes
Fireplaces	Insert
Stories	2
Has Basement	Yes
Basement	Full, Unfinished

### **Exterior**

Exterior	Wood, Stone, Vinyl
Exterior Features	Park/Reserve, Playground Nearby, Schools, Shopping Nearby
Roof	Asphalt Shingles

Construction Wood, Stone, Vinyl  
Foundation Concrete Perimeter

### **Additional Information**

Date Listed January 20th, 2025  
Days on Market 89  
Zoning Zone 53

DATA IS DEEMED RELIABLE BUT IS NOT GUARANTEED ACCURATE BY THE REALTORS® ASSOCIATION OF EDMONTON. COPYRIGHT 2025 BY THE REALTORS® ASSOCIATION OF EDMONTON. ALL RIGHTS RESERVED. Trademarks are owned or controlled by the Canadian Real Estate Association (CREA) and identify real estate professionals who are members of CREA (REALTOR®, REALTORS®) and/or the quality of services they provide (MLS®, Multiple Listing Service®)

Listing information last updated on April 19th, 2025 at 5:32am MDT