

Courtesy Of David Demian Of RE/MAX Real Estate

\$1,495,000 - 11833 102 Avenue, Edmonton

MLS® #E4428188

\$1,495,000

0 Bedroom, 0.00 Bathroom,
Office on 0.00 Acres

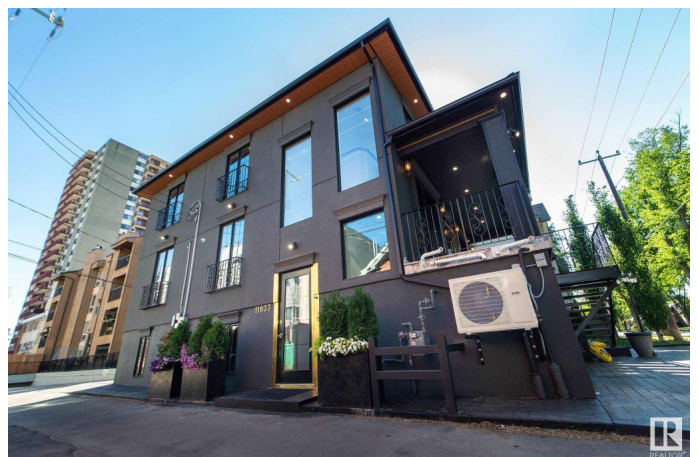
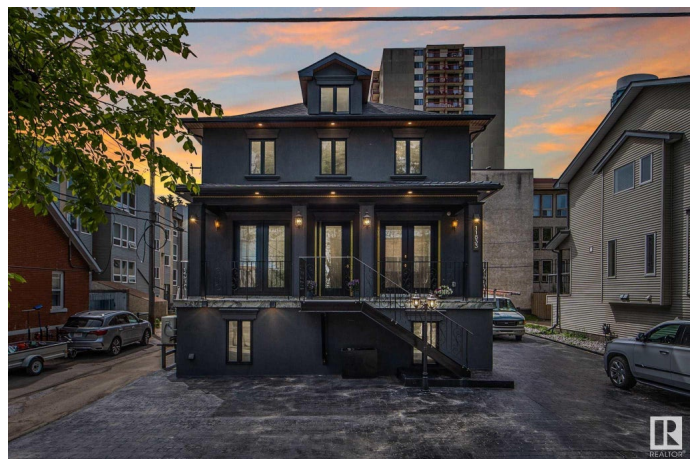
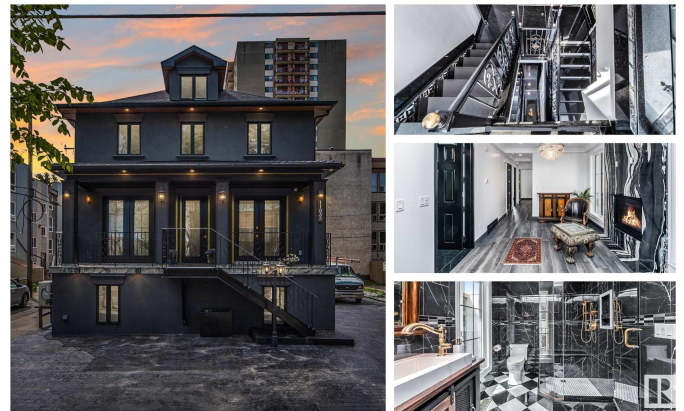
WÃ@hkwÃªntÃ´win, Edmonton, AB

3 EXECUTIVE COMMERCIAL OFFICES INSIDE ONE LUXURY OFFICE BUILDING IN THE HEART OF DOWNTOWN: A standout opportunity just off Jasper Ave! This fully rebuilt heritage property blends timeless elegance with modern upgradesâ€”ideal for office or retail use. Offering over 3 floors of versatile space, each level features a welcoming reception area with fireplace, private offices, designer washrooms, and two floors with kitchenettes. Highlights include marble floors, custom iron railings, contemporary lighting, and a stunning central staircase. Fully upgraded from top to bottom: new foundation, wiring, plumbing, HVAC, windows, roof, and more. Designed for a single business or multi-tenant use, with secure access to each level. Paved parking at the side and rear. Located just two blocks from High Street and Jasper Ave in Edmontonâ€™s vibrant core. A rare, high-impact investment youâ€™ll be proud to own!

Built in 1912

Essential Information

MLS® #	E4428188
Price	\$1,495,000
Bathrooms	0.00
Acres	0.00



Year Built	1912
Type	Office
Status	Active

Community Information

Address	11833 102 Avenue
Area	Edmonton
Subdivision	W&hkw&antwin
City	Edmonton
County	ALBERTA
Province	AB
Postal Code	T5K 0R6

Exterior

Exterior	Concrete, Wood Frame
Roof	Asphalt Shingles
Construction	Concrete, Wood Frame

Additional Information

Date Listed	March 28th, 2025
Days on Market	14
Zoning	Zone 12

DATA IS DEEMED RELIABLE BUT IS NOT GUARANTEED ACCURATE BY THE REALTORS® ASSOCIATION OF EDMONTON. COPYRIGHT 2025 BY THE REALTORS® ASSOCIATION OF EDMONTON. ALL RIGHTS RESERVED. Trademarks are owned or controlled by the Canadian Real Estate Association (CREA) and identify real estate professionals who are members of CREA (REALTOR®, REALTORS®) and/or the quality of services they provide (MLS®, Multiple Listing Service®)

Listing information last updated on April 11th, 2025 at 4:32am MDT