

Courtesy Of Gary Virk Of MaxWell Polaris

\$619,900 - 760 Astoria Way, Devon

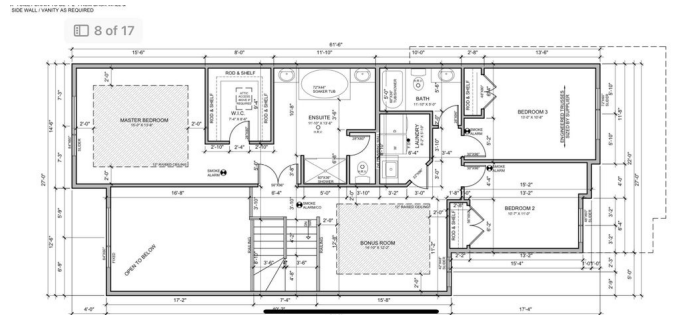
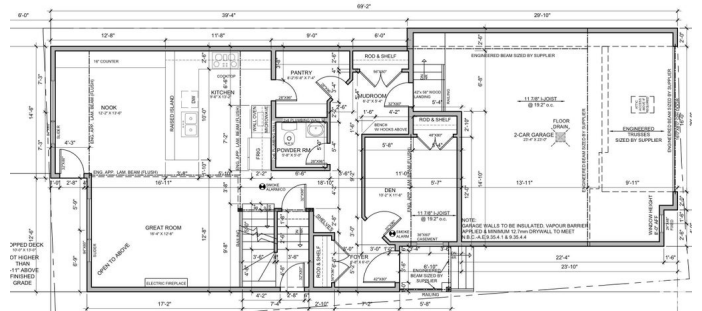
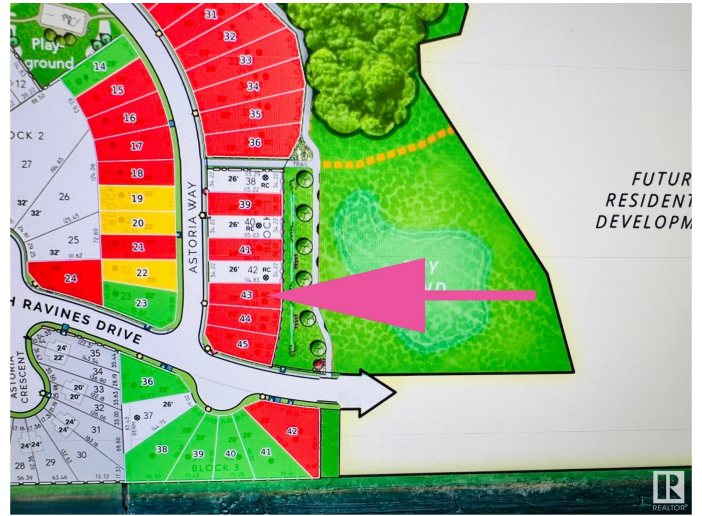
MLS® #E4429616

\$619,900

4 Bedroom, 2.50 Bathroom, 2,350 sqft
Single Family on 0.00 Acres

Devon, Devon, AB

**** BACKS To Natural POND**** This is a PRE-Sale & Will be Ready For Possession End Of July.. Fully Upgraded 2350 sq with 4 Bedrooms + 2.5 bathroom, Bonus Room & ****Double car Garage**** on main Floor Open to Below Living Area With Fireplace, Ceiling Height Kitchen with \$5000 Appliances Credit & Quartz Countertops, Also Main Floor BEDROOM & Half-Bath, Rear Door Open to Sun-Deck.. Maple Spindle Railing lead to 2nd Level, Master Bedroom with Beautiful Pond View & Ensuite, 2 more bedrooms with Full Bathroom & Bonus Room For ur Entertainment, walk-in Laundry with Sink..
****SEPARATE ENTRY** to Basement..
Upgrades includes All 3 levels are 9 feet high with 8ft high doors, Vaulted Ceilings in Master bedroom with Rope Light, Tiles, vinyl Planks on main floor & upgraded Plumbing & Lightning Fixtures,SEPARATE ENTRY To Basement, & MUCH MORE,, Close To All Amenities.



Built in 2025

Essential Information

MLS® #	E4429616
Price	\$619,900
Bedrooms	4
Bathrooms	2.50

Full Baths	2
Half Baths	1
Square Footage	2,350
Acres	0.00
Year Built	2025
Type	Single Family
Sub-Type	Detached Single Family
Style	2 Storey
Status	Active

Community Information

Address	760 Astoria Way
Area	Devon
Subdivision	Devon
City	Devon
County	ALBERTA
Province	AB
Postal Code	T9G 0M7

Amenities

Amenities	Carbon Monoxide Detectors, Ceiling 9 ft., Detectors Smoke, Hot Water Natural Gas, HRV System, 9 ft. Basement Ceiling
Parking	Double Garage Attached, Insulated, Over Sized

Interior

Interior Features	ensuite bathroom
Appliances	Builder Appliance Credit
Heating	Forced Air-1, Natural Gas
Fireplace	Yes
Fireplaces	Insert
Stories	2
Has Basement	Yes
Basement	Full, Unfinished

Exterior

Exterior	Wood, Metal, Stone, Vinyl
Exterior Features	Backs Onto Park/Trees, Playground Nearby, Schools, Shopping Nearby, Stream/Pond
Roof	Asphalt Shingles

Construction Wood, Metal, Stone, Vinyl
Foundation Concrete Perimeter

Additional Information

Date Listed April 6th, 2025
Days on Market 13
Zoning Zone 92

DATA IS DEEMED RELIABLE BUT IS NOT GUARANTEED ACCURATE BY THE REALTORS® ASSOCIATION OF EDMONTON. COPYRIGHT 2025 BY THE REALTORS® ASSOCIATION OF EDMONTON. ALL RIGHTS RESERVED. Trademarks are owned or controlled by the Canadian Real Estate Association (CREA) and identify real estate professionals who are members of CREA (REALTOR®, REALTORS®) and/or the quality of services they provide (MLS®, Multiple Listing Service®)

Listing information last updated on April 19th, 2025 at 9:32am MDT