

Courtesy Of Wassim Moustapha Of Sweetly

\$2,790,000 - 10310 138 Street, Edmonton

MLS® #E4430792

\$2,790,000

1 Bedroom, 0.50 Bathroom, 4,880 sqft
Single Family on 0.00 Acres

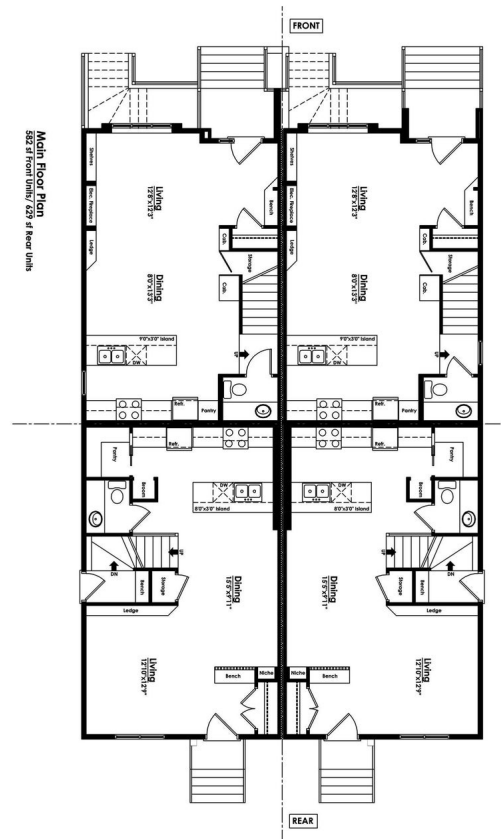
Glenora, Edmonton, AB

The quality and location you would expect when a multi-million-dollar home builder builds a 4 plex. 14 bedrooms. 16 bathrooms. Over 100K in Upgrades, including: Walkout Basement, Upgraded Windows, Commercial grade vinyl flooring, Upgraded tile package, upgraded Appliance's, counter tops and cabinetry, Iron Elements railing, Upgraded Hardy Board exterior and MUCH more! Arguably the most exclusive neighborhood, close to downtown, river valley, premier schools and surrounded by multimillion dollar homes! Proudly built by Varsity Homes. This project qualifies for CMHC MLI select.

Built in 2025

Essential Information

| | |
|----------------|---------------|
| MLS® # | E4430792 |
| Price | \$2,790,000 |
| Bedrooms | 1 |
| Bathrooms | 0.50 |
| Half Baths | 1 |
| Square Footage | 4,880 |
| Acres | 0.00 |
| Year Built | 2025 |
| Type | Single Family |
| Sub-Type | 4PLEX |
| Style | 2 Storey |



Status Active

Community Information

Address 10310 138 Street
Area Edmonton
Subdivision Glenora
City Edmonton
County ALBERTA
Province AB
Postal Code T5N 2J3

Amenities

Amenities See Remarks
Parking See Remarks

Interior

Appliances Dishwasher-Built-In, Dryer, Oven-Microwave, Refrigerator,
Stove-Electric, Washer
Heating Forced Air-1, Natural Gas
Stories 3
Has Suite Yes
Has Basement Yes
Basement Full, Finished

Exterior

Exterior Wood, Fiber Cement
Exterior Features See Remarks
Roof Asphalt Shingles
Construction Wood, Fiber Cement
Foundation Concrete Perimeter

Additional Information

Date Listed April 14th, 2025
Days on Market 10
Zoning Zone 11

DATA IS DEEMED RELIABLE BUT IS NOT GUARANTEED ACCURATE BY THE REALTORS® ASSOCIATION OF EDMONTON. COPYRIGHT 2025 BY THE REALTORS® ASSOCIATION OF EDMONTON. ALL RIGHTS RESERVED. Trademarks are owned or controlled by the Canadian Real Estate Association (CREA) and identify real estate professionals who are members of CREA (REALTOR®, REALTORS®) and/or the quality of services they provide (MLS®, Multiple Listing Service®)

Listing information last updated on April 24th, 2025 at 10:18am MDT