

\$675,000 - 6 26328 Meadowview Drive, Rural Sturgeon County

MLS® #E4431527

\$675,000

3 Bedroom, 2.50 Bathroom, 1,857 sqft
Rural on 1.48 Acres

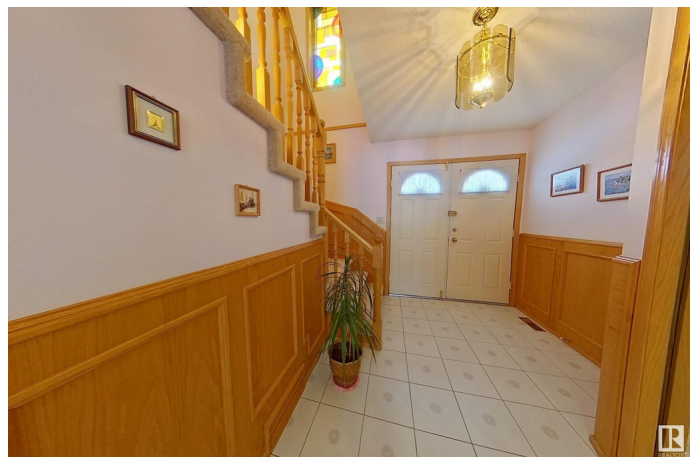
Reyda Vista, Rural Sturgeon County, AB

Escape to country living with this beautifully maintained 1850+ sq ft 2-storey in scenic Sturgeon County! Set on 1.48 acres, this home offers a peaceful, park-like setting just minutes from St. Albert, Edmonton, and a nearby golf course. Bright and airy with large windows throughout, it features rich hardwood floors and a spacious layout perfect for family life and entertaining. Step outside to enjoy the large deck, ideal for relaxing or hosting, surrounded by mature trees, garden areas, and fruit trees. The oversized attached garage is an impressive drive-through tandem garage—ideal for extra parking, storage, or a workshop. The unspoiled basement awaits your imagination and personal touch. A rare opportunity for quiet acreage living with urban convenience!

Built in 1987

Essential Information

MLS® #	E4431527
Price	\$675,000
Bedrooms	3
Bathrooms	2.50
Full Baths	2
Half Baths	1



Square Footage	1,857
Acres	1.48
Year Built	1987
Type	Rural
Sub-Type	Detached Single Family
Style	2 Storey
Status	Active

Community Information

Address	6 26328 Meadowview Drive
Area	Rural Sturgeon County
Subdivision	Reyda Vista
City	Rural Sturgeon County
County	ALBERTA
Province	AB
Postal Code	T8T 0L6

Amenities

Features	Deck, Detectors Smoke, No Animal Home, No Smoking Home
Parking Spaces	6

Interior

Interior Features	ensuite bathroom
Heating	Forced Air-1, Natural Gas
Fireplace	Yes
Stories	2
Has Basement	Yes
Basement	Full, Unfinished

Exterior

Exterior	Wood
Exterior Features	Flat Site, Fruit Trees/Shrubs, Golf Nearby, Landscaped, Private Setting
Lot Description	46 x 131.7
Construction	Wood
Foundation	Concrete Perimeter

Additional Information

Date Listed	April 17th, 2025
Days on Market	7

Zoning

Zone 70

DATA IS DEEMED RELIABLE BUT IS NOT GUARANTEED ACCURATE BY THE REALTORS® ASSOCIATION OF EDMONTON. COPYRIGHT 2025 BY THE REALTORS® ASSOCIATION OF EDMONTON. ALL RIGHTS RESERVED. Trademarks are owned or controlled by the Canadian Real Estate Association (CREA) and identify real estate professionals who are members of CREA (REALTOR®, REALTORS®) and/or the quality of services they provide (MLS®, Multiple Listing Service®)

Listing information last updated on April 24th, 2025 at 7:17pm MDT