

\$460,000 - 7 Hawthorne Crescent, St. Albert

MLS® #E4431638

\$460,000

2 Bedroom, 2.00 Bathroom, 1,154 sqft

Single Family on 0.00 Acres

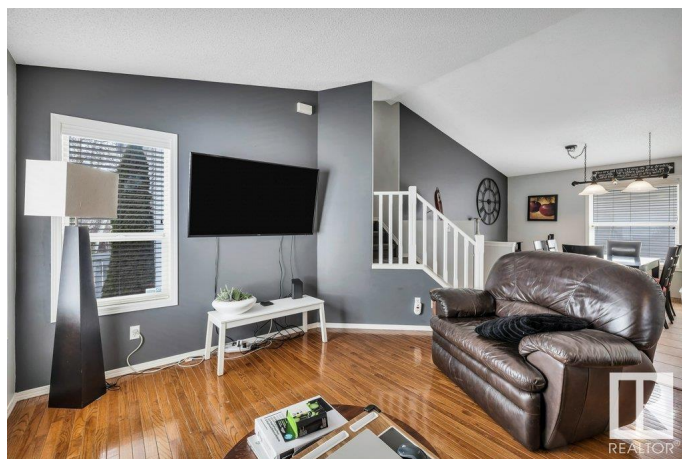
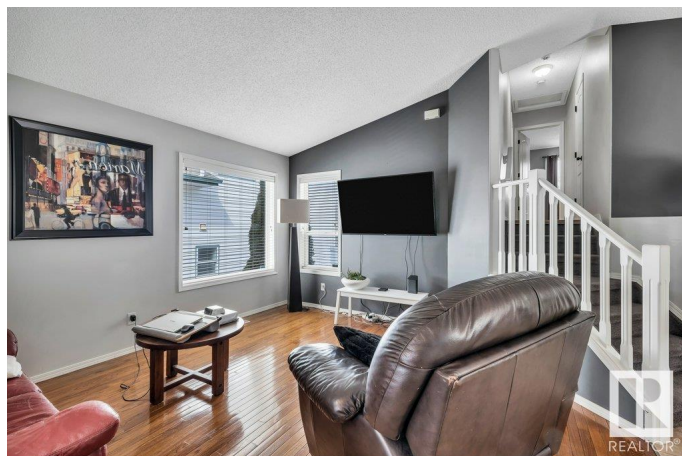
Heritage Lakes, St. Albert, AB

Welcome home to this fully finished 1,154 sq ft 4-level split, backing the trees, in the highly sought-after community of Heritage Lakes! Step inside to discover an inviting open-concept main floor featuring a spacious kitchen complete with a corner pantry, stainless steel appliances, and ample cabinetry. The adjoining dining nook opens into the cozy and welcoming living room—ideal for relaxing or entertaining. Upstairs, you'll find an oversized primary bedroom that offers versatility and potential, easily convertible into two separate bedrooms to suit your needs. A 6-piece bathroom completes this level. The lower level showcases a warm and inviting family room with a gas fireplace and direct access through patio doors to the private backyard. Enjoy summer evenings on the large, deck—perfect for entertaining. Upgrades include new shingles (2022) hot water tank (2021).

Built in 1996

Essential Information

MLS® #	E4431638
Price	\$460,000
Bedrooms	2
Bathrooms	2.00
Full Baths	2



Square Footage	1,154
Acres	0.00
Year Built	1996
Type	Single Family
Sub-Type	Detached Single Family
Style	4 Level Split
Status	Active

Community Information

Address	7 Hawthorne Crescent
Area	St. Albert
Subdivision	Heritage Lakes
City	St. Albert
County	ALBERTA
Province	AB
Postal Code	T8N 6N5

Amenities

Amenities	Deck, Natural Gas BBQ Hookup
Parking	Double Garage Attached

Interior

Appliances	Dishwasher-Built-In, Dryer, Garage Control, Garage Opener, Hood Fan, Refrigerator, Storage Shed, Stove-Electric, Washer, Window Coverings
Heating	Forced Air-1, Natural Gas
Fireplace	Yes
Fireplaces	Tile Surround
Stories	4
Has Basement	Yes
Basement	Full, Finished

Exterior

Exterior	Wood, Vinyl
Exterior Features	Backs Onto Park/Trees, Fenced, Public Transportation, Schools, Shopping Nearby
Roof	Asphalt Shingles
Construction	Wood, Vinyl
Foundation	Concrete Perimeter

Additional Information

Date Listed April 18th, 2025

Days on Market 1

Zoning Zone 24

DATA IS DEEMED RELIABLE BUT IS NOT GUARANTEED ACCURATE BY THE REALTORS® ASSOCIATION OF EDMONTON. COPYRIGHT 2025 BY THE REALTORS® ASSOCIATION OF EDMONTON. ALL RIGHTS RESERVED. Trademarks are owned or controlled by the Canadian Real Estate Association (CREA) and identify real estate professionals who are members of CREA (REALTOR®, REALTORS®) and/or the quality of services they provide (MLS®, Multiple Listing Service®)

Listing information last updated on April 19th, 2025 at 11:32am MDT