

\$449,999 - 942 East Gate, Edmonton

MLS® #E4432238

\$449,999

3 Bedroom, 3.50 Bathroom, 1,356 sqft

Single Family on 0.00 Acres

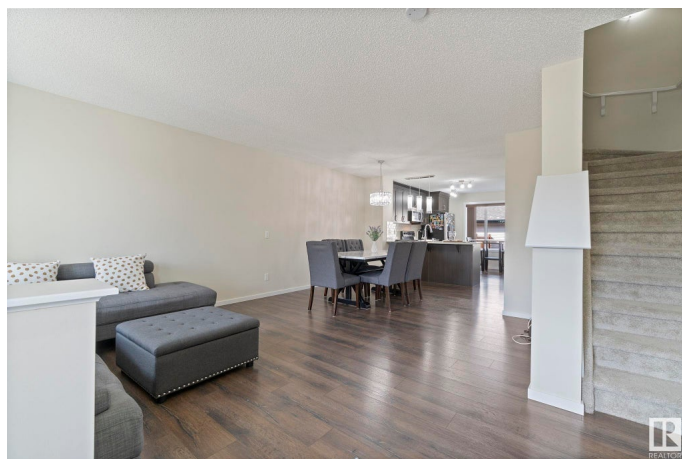
Edgemont (Edmonton), Edmonton, AB

Welcome to this beautifully maintained end-unit home in the sought-after community of Edgemont, perfectly positioned across from a peaceful ravine and park. This spacious 3-bedroom home offers an additional den or potential 4th bedroom in the fully finished basement, complete with an entertainment room and total of 3.5 baths. The bright and functional layout features an inviting main floor and a cozy, low-maintenance backyard with a charming gazebo—perfect for relaxing or entertaining. The double detached garage includes an extra parking pad for added convenience. Nestled in a quiet, family-friendly neighborhood with future school plans, scenic trails, and quick access to Anthony Henday, this home blends comfort and lifestyle in one ideal location. No Condo Fees!

Built in 2017

Essential Information

MLS® #	E4432238
Price	\$449,999
Bedrooms	3
Bathrooms	3.50
Full Baths	3
Half Baths	1
Square Footage	1,356
Acres	0.00



Year Built	2017
Type	Single Family
Sub-Type	Residential Attached
Style	2 Storey
Status	Active

Community Information

Address	942 East Gate
Area	Edmonton
Subdivision	Edgemont (Edmonton)
City	Edmonton
County	ALBERTA
Province	AB
Postal Code	T6M 0V4

Amenities

Amenities	Detectors Smoke, Gazebo, No Animal Home, No Smoking Home
Parking	Double Garage Detached

Interior

Interior Features	ensuite bathroom
Appliances	Dishwasher-Built-In, Microwave Hood Fan, Refrigerator, Stacked Washer/Dryer, Stove-Electric, See Remarks
Heating	Forced Air-1, Natural Gas
Stories	3
Has Basement	Yes
Basement	Full, Finished

Exterior

Exterior	Wood, Vinyl
Exterior Features	Low Maintenance Landscape, Park/Reserve, Ravine View, Shopping Nearby
Roof	Asphalt Shingles
Construction	Wood, Vinyl
Foundation	Concrete Perimeter

Additional Information

Date Listed	April 23rd, 2025
Days on Market	2

Zoning

Zone 57

DATA IS DEEMED RELIABLE BUT IS NOT GUARANTEED ACCURATE BY THE REALTORS® ASSOCIATION OF EDMONTON. COPYRIGHT 2025 BY THE REALTORS® ASSOCIATION OF EDMONTON. ALL RIGHTS RESERVED. Trademarks are owned or controlled by the Canadian Real Estate Association (CREA) and identify real estate professionals who are members of CREA (REALTOR®, REALTORS®) and/or the quality of services they provide (MLS®, Multiple Listing Service®)

Listing information last updated on April 25th, 2025 at 4:17am MDT