

# \$369,900 - 18 2710 66 St, Edmonton

MLS® #E4432339

**\$369,900**

3 Bedroom, 2.50 Bathroom, 1,304 sqft  
Condo / Townhouse on 0.00 Acres

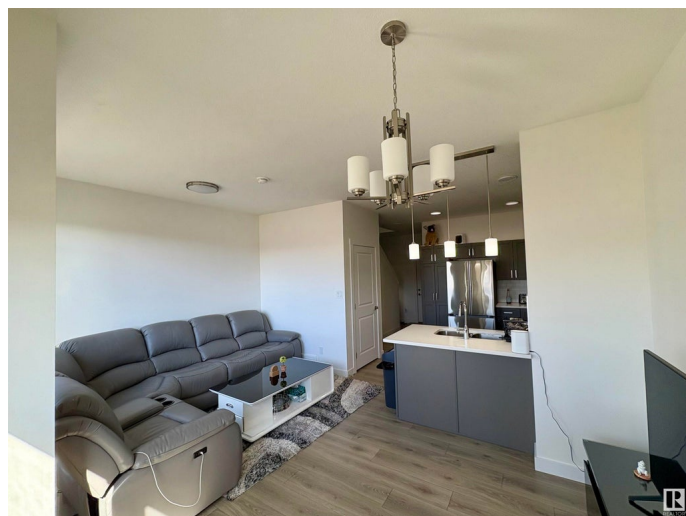
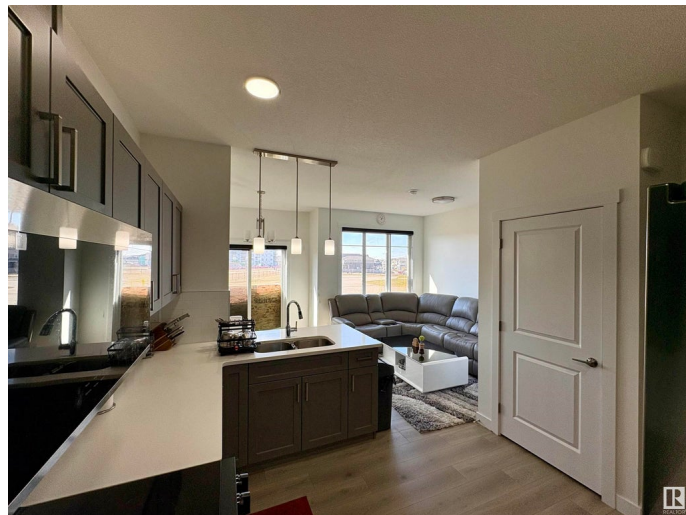
The Orchards At Ellerslie, Edmonton, AB

Perfect for First-Time Home Buyers & Investors!!! This beautiful home comes with an attached double car garage and is packed with features that offer both style and functionality. Main floor offers you A spacious kitchen with quartz countertops, sleek cabinetry, high-end stainless steel appliances, and an oversized walk-through pantry Central island with a double sink and breakfast bar—perfect for enjoying your morning coffee Bright and airy living room with large windows that flood the space with natural light Stylish, low-maintenance flooring throughout A convenient 2-piece powder room. On upstairs you will find generously sized primary bedroom with a walk-in closet and a modern 3-piece ensuite two additional large bedrooms and a second 3-piece bathroom. Upstairs laundry room for added convenience. Unbeatable Location Just steps away from schools, parks, and all other amenities

Built in 2025

## Essential Information

MLS® #	E4432339
Price	\$369,900
Bedrooms	3
Bathrooms	2.50
Full Baths	2



Half Baths	1
Square Footage	1,304
Acres	0.00
Year Built	2025
Type	Condo / Townhouse
Sub-Type	Townhouse
Style	2 Storey
Status	Active

### **Community Information**

Address	18 2710 66 St
Area	Edmonton
Subdivision	The Orchards At Ellerslie
City	Edmonton
County	ALBERTA
Province	AB
Postal Code	T6X 3H4

### **Amenities**

Amenities	Carbon Monoxide Detectors, Detectors Smoke, Hot Water Electric, No Animal Home, No Smoking Home
Parking	Double Garage Attached

### **Interior**

Interior Features	ensuite bathroom
Appliances	Dryer, Garage Control, Garage Opener, Oven-Microwave, Refrigerator, Stove-Electric, Washer
Heating	Forced Air-1, Electric, Natural Gas
Stories	2
Has Basement	Yes
Basement	Full, Unfinished

### **Exterior**

Exterior	Wood, Vinyl
Exterior Features	Flat Site, Playground Nearby, Schools, Shopping Nearby
Roof	Asphalt Shingles
Construction	Wood, Vinyl
Foundation	Concrete Perimeter

### **Additional Information**

Date Listed	April 22nd, 2025
Days on Market	2
Zoning	Zone 53
HOA Fees	450
HOA Fees Freq.	Annually
Condo Fee	\$152

DATA IS DEEMED RELIABLE BUT IS NOT GUARANTEED ACCURATE BY THE REALTORS® ASSOCIATION OF EDMONTON. COPYRIGHT 2025 BY THE REALTORS® ASSOCIATION OF EDMONTON. ALL RIGHTS RESERVED. Trademarks are owned or controlled by the Canadian Real Estate Association (CREA) and identify real estate professionals who are members of CREA (REALTOR®, REALTORS®) and/or the quality of services they provide (MLS®, Multiple Listing Service®)

Listing information last updated on April 24th, 2025 at 6:47am MDT