

## \$765,000 - 9835 143 Street, Edmonton

MLS® #E4432820

**\$765,000**

0 Bedroom, 0.00 Bathroom,  
Single Family on 0.00 Acres

Crestwood, Edmonton, AB

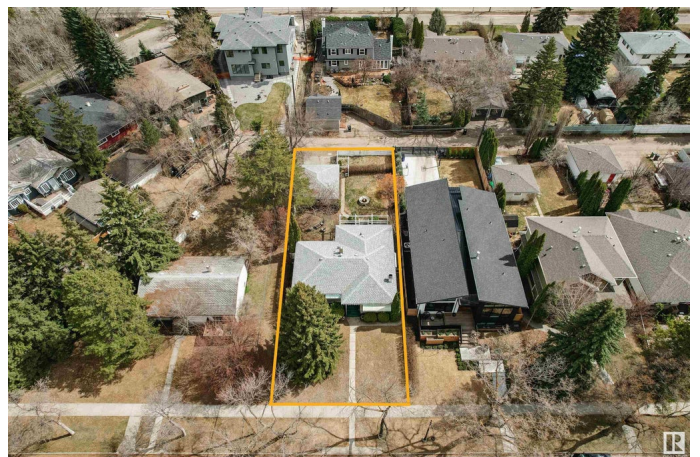
Prime Lot in Prestigious Crestwood â€“ Build Your Dream Home! Discover the perfect canvas for your custom home on this expansive 53.7' x 144.9' lot across from an island park. Enjoy a vibrant community with great schools, Lâ€™™Oca Market, charming restaurants, cozy coffee shops, and quick access to downtown â€“ all just minutes away. You're conveniently steps away from the Mackinnon Ravine with trails leading to the North Saskatchewan River. This is the lot you've been waiting for.

### Essential Information

MLS® #	E4432820
Price	\$765,000
Bathrooms	0.00
Acres	0.00
Type	Single Family
Sub-Type	Vacant Lot/Land
Status	Active

### Community Information

Address	9835 143 Street
Area	Edmonton
Subdivision	Crestwood
City	Edmonton
County	ALBERTA



Province	AB
Postal Code	T5N 2R4

**Exterior**

Exterior Features	Back Lane, Paved Lane, Playground Nearby, Public Transportation, Schools, Shopping Nearby
-------------------	---

**School Information**

Elementary	Crestwood School
Middle	Crestwood School
High	Ross Shepherd High School

**Additional Information**

Date Listed	April 25th, 2025
Days on Market	4
Zoning	Zone 10

DATA IS DEEMED RELIABLE BUT IS NOT GUARANTEED ACCURATE BY THE REALTORS® ASSOCIATION OF EDMONTON. COPYRIGHT 2025 BY THE REALTORS® ASSOCIATION OF EDMONTON. ALL RIGHTS RESERVED.Trademarks are owned or controlled by the Canadian Real Estate Association (CREA) and identify real estate professionals who are members of CREA (REALTOR®, REALTORS®) and/or the quality of services they provide (MLS®, Multiple Listing Service®)

Listing information last updated on April 29th, 2025 at 9:17am MDT